

Eachtra Journal

ISSN 2009-2237

Issue 1

January / March 2009



Eachtra Archaeological Projects

www.eachtra.ie
info@eachtra.ie

Introduction to the Journal

It is our intention to use this web-based Journal to "narrate our work".

As we complete research articles, lectures, posters and other documents we will publish them here. Miscellaneous items of interest will also be recorded along with upcoming events.

In this way we intend to marry the strong Irish tradition of publication in journals with modern web-based media.

In this printed version of the Journal some slide presentations and reports in pdf format are not reproduced and must be viewed online.

Table of Contents

Articles

N18 Oranmore-Gort, Co. Galway

Monitoring of Archaeological Monuments Programme

With or without corners! Thoughts on some recent prehistoric house excavations

Polish language excavation recording context sheets

Miscellany

Near The Bend In The River

Timespaces.eu is launched

Star Carr and visualisation - the estrangement factor

National Inventory of Architectural Heritage Resources

Wessex Archaeology test trenches evident in google aerial photos

The words we use - Wordle & Eachtra's RSS Feed 200209

Molas & Shakespeares theatre at Shoreditch, London

Near the Bend in the River - Eachtra speech 22/1/09

Prehistoric water management & a Near East historic source

Google Streetview coming to Ireland

Stone boiling technology reference Journal of Archaeological Science

Journal Word Cloud 2009

Specialist, Illustration, SparkofInk, Margaret Kryszka

Illustrate Archaeology UK-based group

Climate Change and Archaeology - Rapid Coastal Zone Assessment Surveys in the UK

Events

Folklife Conference Sept 2008

Roscrea Spring Conference 2009

Treasures of the Royal Irish Academy Exhibition

14th International Congress “Cultural Heritage and New Technologies”

The Future of Historic Cities: Challenges, Contradictions, Continuities

LAMAS 46th ANNUAL CONFERENCE OF LONDON ARCHAEOLOGISTS

UCC Centenary Archaeology Department Lecture Series 2009

Resorting to the Coast: Tourism, Heritage and Cultures of the Seaside

Second Meeting Theoretical Archaeology Group at Stanford, California, May 2009

Hill of Tara - Round Table - Meeting Tues, 24 March 2009

Twenty-third Conference of Irish Medievalists — 27th – 30th June 2009

The Rath of the Synods book launch 27th March 2009

From Cú Chulainn to Canning – Evolution of Hurling from Warrior to Hero! - Lecture by Dr Aidan O’Sullivan

AYIA 41st Annual Conference - April 3rd - 5th 2009 Sligo

10th Cambridge Heritage Seminar The Future of Historic Cities: Challenges, Contradictions, Continuities

N18 Oranmore-Gort, Co. Galway

This entry is part 1 of 34 in the Issue **[1]**

*Eachtra Archaeological Projects
for Galway County Council and the National Roads Authority
Engineers – Hyder Tobin Consultants*

[2] [Introduction](#)

[3] [Landscape](#)

[4] [Archaeological and historical background](#)

[5] [Phase 1](#)

[6] [Aims](#)

[7] [Results](#)

[8] [Team](#)

[9] [Phase 2](#)

[10] [Excavated Sites](#)

[11] [Project Team](#)

[12] [Acknowledgements](#)

[13]



N18 OG Project location

The project is an approved road development, having been approved by An Bórd Pleanála on 7th June 2007. The development will consist of approximately 27.2 km of dual carriageway, and all associated works.

The proposed scheme consists of:

- 27.2 km of standard dual two-lane carriageway;
- 8.7 km of realigned local roads;
- 16.9 km of accommodation works access tracks.
- Three grade separated interchanges at Rathmorrissey, Kiltiernan and Gort
- Nineteen road bridges
- Two river bridges (over the Clarinbridge and Dunkellin Rivers)
- One railway bridge
- Four accommodation bridges
- Four accommodation underpasses

The area of proposed archaeological investigations lies within the footprint of the proposed scheme as defined by the Compulsory Purchase Order (CPO) published by Galway County Council on 1st August 2006.

Introduction

Eachtra Archaeological Projects were commissioned to provide archaeological services in three Phases

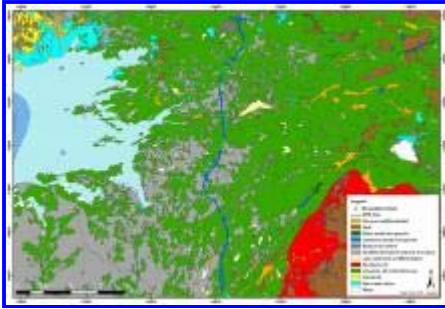
Phase 1 – Surveys, Test Excavations and Reporting

Phase 2 – Full Excavation of significant archaeological features or deposits discovered during the phase 1 works

Phase 3 – Post-excavation analyses and the production of illustrated reports fit for publication

Landscape

[14]



N18OG Subsoil

The underlying geology is Carboniferous limestone of the Burren and Tubber formations.

Namurian shales and sandstones to the west in Clare and Devonian Old Red sandstone to the east in the Slieve Aughty uplands.

Glacial till overlies the bedrock to varying depths (0–5 m) and the soils derived from the till are generally shallow brown earths. The thin limestone enriched topsoil makes relatively good grass pasture, which is the predominant landuse in this area today.

Some areas of low-lying grasslands, peat bogs, eskers, low rounded drumlins and karst limestone pavements

The height above sea level varies from less than 10 m to 40 m OD.

Archaeological and historical background

The Archaeological Inventory of County Galway lists over 7100 known monuments (Conroy 1988, OPW 1993, 1). South County Galway contains a high proportion of the total number of sites recorded in the county overall.

There has most likely been continuous settlement in south County Galway since the end of the last glaciation, however no examples of Mesolithic occupation have been so far identified in south Galway.

There are some examples of Neolithic tombs, but no evidence of settlement.

There is a high concentration of Bronze Age barrows in east Galway and numerous examples of burnt mounds in the vicinity of this road scheme.

Early medieval ringforts and cashels are the most numerous monument type in this landscape and are recognized in placenames by the elements *lios*, *rath*, *caher* or *dún*.

The Uí Fiachrach Aidne was the dominant clan or faction in early medieval south Galway until the establishment of the Hiberno-Norman Lordship of Connacht by Richard de Burgo in the 1230s.

Phase 1

Aims

[15]



Testing

- to establish the character significance and extent of any archaeological features finds or deposits revealed;
- recommend sites for further excavation at phase 2.

All work at phase 1 followed recommendations made by EIS for the scheme:

- Desk based study
- Earthwork surveys x 14
- A building survey x 1
- Townland boundary Surveys x 31
- A watercourse survey including metal detecting x 1
- Test excavation by hand x 10
- Test excavation by machine:
 - at geophysical anomalies x 19 (geophysical survey undertaken by Minerex Geophysics Ltd)
 - adjacent to recorded or suspected monuments x 10
- Centre line testing by machine in all other areas (162,263 m²)
- Field walking - Several areas completely overgrown with hazel and underlain with bare limestone karst could not be tested by machine. As an alternative, field-walking and map regression to identify any upstanding archaeological features covered by the dense scrub and hazel was undertake.

Results

[16]



N18 OG Phase 1 testing

- 31 townland boundaries recorded
- Area 5 – 12 newly discovered features - 8 sites for phase 2 excavations
- Area 4 – 5 newly discovered features - 1 site for phase 2 excavations
- Area 3 – 6 newly discovered sites - 8 sites for phase 2 excavations
- Area 2 – 2 newly discovered sites - 4 sites for phase 2 excavations
- Area 1 – 3 newly discovered sites – none for phase 2 excavations

Team

- 3 x excavation teams – directors, supervisors and assistants
- 2 x 20 ton tracked excavators
- Liaison officer
- Surveyor
- Reporting team
- Management team

Phase 2

Excavated Sites

[17]



N18 OG Sites Location

21 sites were identified from phase 1 investigations and were fully excavated from January to May 2008:

- Derrydonnell More - destroyed cashel, RMP site – identified by hand testing
- Coldwood Foorkil – disturbed burnt mound – identified by centre line testing
- Moyveela 3 – clachan settlement – identified by field walking
- Moyveela 1 and 2 – burnt mounds – identified by centreline testing
- Ballinillaun 1 and 2 – pits – identified by centreline testing
- Lavally – estate cottage – identified during the EIS
- Roevehagh – pits – identified by centreline testing

[18]



Owenbristly

- Caherweelder 7 – metal working pit - identified by centreline testing
- Caherweelder 5 – Large Burnt mound – RMP site
- Caherweelder 4 – Well – RMP site
- Caherweelder 1, 2, 3 and 6 – burnt mounds - identified by centreline testing
- Owenbristly – cashel with burials - identified by centreline testing
- Drumharsna north – field boundaries – RMP site
- Drumharsna south – cashel – RMP site
- Cullenagh More – lime kiln – field walking
- Ballyglass West – large burnt mound - identified by centreline testing

Project Team

- 6 excavation teams – 6 directors, 13 supervisors, 1 osteo archaeologist, 56 site assistants and 6 general operatives
- Liaison officer/fencer
- Surveyor and assistant
- GIS x 3 – management, data input and reporting
- Office manager and assistant
- Senior Archaeologist

Acknowledgements

Eachtra Archaeological Projects would like to acknowledge the assistance of the following individuals and organisations:

- Tony Collins Senior Executive Engineer, Galway County Council;
- Laura Henegan, Galway County Council;
- Damien O'Reilly PSCS, Irish Drilling Ltd;
- Joseph O'Brien Engineer, Hyder Tobin Consultants;
- Jerry O'Sullivan, NRA Project Archaeologist;
- Martin Reid, Department of the Environment Heritage, and Local Government;
- The co-operation with the testing and excavation programme by the landowners along the

scheme is also gratefully acknowledged.

Issue Navigation

| [19] [Next entry»](#)

Article printed from Eachtra Archaeological Projects: <http://eachtra.ie>

URL to article: <http://eachtra.ie/index.php/journal/n18-ornamore-gort/>

URLs in this post:

[1] 1: <http://eachtra.ie/index.php/journal/issues/1/>

[2] Introduction: [#Intro](#)

[3] Landscape: [#Landscape](#)

[4] Archaeological and historical background: [#Background](#)

[5] Phase 1: [#Phase1](#)

[6] Aims: [#Aims_ph1](#)

[7] Results: [#Results](#)

[8] Team: [#Team](#)

[9] Phase 2: [#Phase2](#)

[10] Excavated Sites: [#Sites](#)

[11] Project Team: [#Project_team](#)

[12] Acknowledgements: [#Acknowledgements](#)

[13] Image: http://eachtra.ie/new_site/wp-content/uploads/2008/12/n18og-project-location.jpg

[14] Image: http://eachtra.ie/new_site/wp-content/uploads/2008/12/n18-og-subsoil.jpg

[15] Image: http://eachtra.ie/new_site/wp-content/uploads/2008/12/testing01.jpg

[16] Image: http://eachtra.ie/new_site/wp-content/uploads/2008/12/n18-og-testing-phase-1.gif

[17] Image: http://eachtra.ie/new_site/wp-content/uploads/2008/12/n18-og-sites-location.jpg

[18] Image: http://eachtra.ie/new_site/wp-content/uploads/2008/12/owenbristy.jpg

[19] Next entry»: <http://eachtra.ie/index.php/journal/folklife-conference-sept-2008/>

Monitoring of Archaeological Monuments Programme

This entry is part 4 of 34 in the Issue **[1]**

Pilot Survey in Counties Clare, Roscommon and Waterford

Protection of heritage requires careful and balanced strategies that must be informed by reliable and up-to-date information. The completion of the Record of Monuments and Places (RMP) across the State in 1998 provided for the first time a basic level of statutory protection for all known archaeological monuments. Nevertheless there is evidence of the occurrence of damage, or destruction at monuments. To combat this problem the National Heritage Plan (2002) singled out as a key priority and action 'the establishment of an enhanced monitoring programme'.

The objectives of a National Monitoring Programme are:

- to establish a stratified and reliable baseline against which the future condition and survival of the recorded archaeological resource can be monitored at both national and county levels at appropriate intervals;
- to determine the levels of risk to monuments in general;
- to provide a general sampling protocol for future programmes. Prior to undertaking a National Monitoring Programme a pilot monitoring programme will be carried out.

The pilot programme was undertaken by Eachtra in 2007 at the behest of the Department of the Environment Heritage and Local Government. The aims of the pilot programme were:

- to estimate the random variation for the criteria that are of importance, for example, the level of destruction of monuments;
- enable all operational aspects to be tested and if necessary modified.

The work entailed visiting 1,913 designated monuments listed in the RMP in three counties (408 in Waterford, 1,028 in the Burren area of County Clare, and 477 in County Roscommon). All these monuments are shown on the RMP maps for the relevant counties. A two-page form outlining the present condition was completed at each monument. The Forms were completed with reference to the previous condition of the monuments as described by the Archaeological Survey of Ireland in recent decades. The data collected from this work was inputted into a database allowing for detailed statistical analysis of the results. A report evaluating the field methodology was also produced.

Issue Navigation

[2] [«Previous entry](#) | [3] [Next entry»](#)

Article printed from Eachtra Archaeological Projects: <http://eachtra.ie>

URL to article: <http://eachtra.ie/index.php/journal/archaeological-monuments-programme/>

URLs in this post:

[1] 1: <http://eachtra.ie/index.php/journal/issues/1/>

[2] «Previous entry: <http://eachtra.ie/index.php/journal/near-the-bend-in-the-river/>

[3] Next entry»: <http://eachtra.ie/index.php/journal/timespaceseu-is-launched/>

With or without corners! Thoughts on some recent prehistoric house excavations

This entry is part 12 of 34 in the Issue **[1]**

Last September 2008 we presented a lecture to the annual NRA Seminar on recent archaeological findings on Irish road projects - the main theme of our talk was how archaeological hypotheses are developed, tested, reviewed and reformulated - we took Neolithic rectangular houses and Bronze Age round-houses as case studies and the main lecture slides are presented here. Some of the interactivity of the slides did not translate into slideshare and we will also probably present them as an Adobe pdf file. Slides 20 and 21 are screencaptures taken from work done by [2] [Digitale Archaeologie](#) for Cork County Council.

[3] [With or without Corners](#)

View more [4] [presentations](#) from [5] [eachtra](#). (tags: [6] [eachtra](#) [7] [archaeology](#))

Issue Navigation

[8] [«Previous entry](#) | [9] [Next entry»](#)

Article printed from Eachtra Archaeological Projects: <http://eachtra.ie>

URL to article: <http://eachtra.ie/index.php/journal/with-or-without-corners-thoughts-on-some-recent-prehistoric-house-excavations/>

URLs in this post:

[1] 1: <http://eachtra.ie/index.php/journal/issues/1/>

[2] Digitale Archaeologie : <http://www.digitale-archaeologie.de/>

[3] With or without Corners: <http://www.slideshare.net/eachtra/with-or-without-corners?type=powerpoint>

[4] presentations: <http://www.slideshare.net/>

[5] eachtra: <http://www.slideshare.net/eachtra>

[6] eachtra: <http://slideshare.net/tag/eachtra>

[7] archaeology: <http://slideshare.net/tag/archaeology>

[8] «Previous entry: <http://eachtra.ie/index.php/journal/the-words-we-use-wordle-eachtras-rss-feed-200209/>

[9] Next entry»: <http://eachtra.ie/index.php/journal/14th-international-congress-cultural-heritage-and-new-technologies/>

Polish language excavation recording context sheets

This entry is part 20 of 34 in the Issue **[1]**

Given that a [2] [common pool](http://www.discovering-archaeologists.eu/outlines_of_archaeologica.html) of field archaeologists now operates throughout Europe we developed a number of foreign language working documents over the last few years, ranging from health and safety to excavation recording sheets.

Eachtra's recording sheets are modelled on Molas site excavation manual sheets from the 1980s but have been modified over the years to reflect the knowledge and experience of a large number of excavators.

[3] [Deposit sheet_Polish](#)

[4] [Cut sheet_Polish](#)

Issue Navigation

[5] [«Previous entry](#) | [6] [Next entry»](#)

Article printed from Eachtra Archaeological Projects: <http://eachtra.ie>

URL to article: <http://eachtra.ie/index.php/journal/polish-language-excavation-recording-context-sheets/>

URLs in this post:

[1] 1: <http://eachtra.ie/index.php/journal/issues/1/>

[2] common pool : http://www.discovering-archaeologists.eu/outlines_of_archaeologica.html

[3] Deposit sheet_Polish: http://eachtra.ie/new_site/wp-content/uploads/2009/03/deposit-sheet-polish.pdf

[4] Cut sheet_Polish: http://eachtra.ie/new_site/wp-content/uploads/2009/03/cut-sheet-polish.pdf

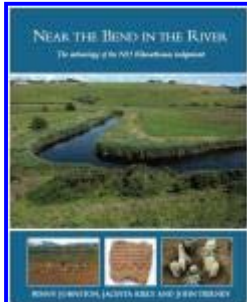
[5] «Previous entry: <http://eachtra.ie/index.php/journal/second-meeting-theoretical-archaeology-group-at-stanford-california-may-2009/>

[6] Next entry»: <http://eachtra.ie/index.php/journal/near-the-bend-in-the-river-eachtra-speech-22109/>

Near The Bend In The River

This entry is part 3 of 34 in the Issue **[1] 1**

The Archaeology of the N25 Kilmacthomas realignment



[2] Eachtra have pleasure in announcing the publication of **Near The Bend In The River** by Penny Johnston, Jacinta Kiely and John Tierney, the conclusion of our work on the N25 road realignment in mid-Waterford.

The book will be launched by Waterford County Council in association with the National Roads Authority at 5.00pm Thursday 22nd January at the public library in Dungarvan, Co. Waterford. The book costs €25 and can be bought at all good bookshops or online at [3] [Wordwell](#).

Outline

The economic growth experienced by Ireland in the past twenty years has seen a related growth in our understanding of the early history and archaeology of many areas, particularly in big towns and along the new roadways which streak across the landscape.

In Waterford the first extensive excavations along one of the county's roads were carried out between 1998 and 2000, in advance of construction of the realignment of the N25 south of the little town of Kilmacthomas. Previous investigations in this area had been limited and very little was known about the area's history and archaeology. *Near the bend in the river — the archaeology of the N25 Kilmacthomas realignment* (National Roads Authority €25) by Penny Johnston, Jacinta Kiely and John Tierney presents the results of the excavations along the 8.5 km route which revealed that people have lived here for at least 6000 years. A number of settlements are dateable to the period 4000-1000 BC, while outdoor cooking and bathing places (fulachta fiadh) were in use c. 2000-1000 BC.

Analysis of the individual sites excavated showed, for example, that c. 2300 BC the farmers at Aghanaglogh choose to grow barley in preference to wheat, while hazelnuts and crab apples were also collected and eaten. They lived in a round house and used the latest style of pots, tall and nicely decorated, known to archaeologists across Europe as Beakers, which were designed to hold special drinks, perhaps made here from the barley.

In the historic period the area seems to have been favoured by travelling smiths for smelting and smithing iron, the ore for which would have been available from bogs in the nearby uplands; some copper was also smelted, presumably from ores collected downriver at Bonmahon on the coast. A corn drying kiln shows that then, as now, cereals needed to be dried out before grinding. Oats would have been introduced as a crop at this time, and a large quantity was found as grain and chaff at one of the metalworking sites - the oats may have been used as a fuel or a tinder, evidence of early use of bio-fuels!

Issue Navigation

[4] [«Previous entry](#) | [5] [Next entry»](#)

Miscellany printed from Eachtra Archaeological Projects: <http://eachtra.ie>

URL to miscellany: <http://eachtra.ie/index.php/journal/near-the-bend-in-the-river/>

URLs in this post:

[1] 1: <http://eachtra.ie/index.php/journal/issues/1/>

[2] Image: http://eachtra.ie/new_site/wp-content/uploads/2009/01/n25kilmac_book-cover_jan091.jpg
[3] Wordwell: <http://www.wordwellbooks.com>
[4] «Previous entry: <http://eachtra.ie/index.php/journal/folklife-conference-sept-2008/>
[5] Next entry»: <http://eachtra.ie/index.php/journal/archaeological-monuments-programme/>

- Eachtra Journal - <http://eachtra.ie/index.php/journal/> -

Timespaces.eu is launched

This entry is part 5 of 34 in the Issue **[1] 1**

Our old work colleagues Paul Rondelez and Ewalina Chrobak have launched [2] www.timespaces.eu, which is a website dedicated to collecting and publishing 3-dimensional visualisations of archaeological data. These can be individual sites, landscapes or larger regional studies. The first site published is a 19th century mine in Andalusia.

Issue Navigation

[3] [«Previous entry](#) | [4] [Next entry»](#)

Miscellany printed from Eachtra Archaeological Projects: <http://eachtra.ie>

URL to miscellany: <http://eachtra.ie/index.php/journal/timespaceseu-is-launched/>

URLs in this post:

[1] 1: <http://eachtra.ie/index.php/journal/issues/1/>

[2] www.timespaces.eu: <http://www.timespaces.eu>

[3] «Previous entry: <http://eachtra.ie/index.php/journal/archaeological-monuments-programme/>

[4] Next entry»: <http://eachtra.ie/index.php/journal/star-carr-and-visualisation-the-estrangement-factor/>

- Eachtra Journal - <http://eachtra.ie/index.php/journal/> -

Star Carr and visualisation - the estrangement factor

This entry is part 6 of 34 in the Issue **[1] 1**

Star Carr is an iconic British mesolithic site and [2] [these students](#) are bringing modern 3D visualisation tools to bear on the antler-frontlets found at the.

Issue Navigation

[3] [«Previous entry](#) | [4] [Next entry»](#)

Miscellany printed from Eachtra Archaeological Projects: <http://eachtra.ie>

URL to miscellany: <http://eachtra.ie/index.php/journal/star-carr-and-visualisation-the-estrangement-factor/>

URLs in this post:

[1] 1: <http://eachtra.ie/index.php/journal/issues/1/>

[2] these students : <http://antler.wearer.googlepages.com/projectoutline4>

[3] «Previous entry: <http://eachtra.ie/index.php/journal/timespaceseu-is-launched/>

[4] Next entry»: <http://eachtra.ie/index.php/journal/national-inventory-of-architectural-heritage-resources/>

- Eachtra Journal - <http://eachtra.ie/index.php/journal/> -

National Inventory of Architectural Heritage Resources

This entry is part 7 of 34 in the Issue **[1] 1**

The National Inventory of Architectural Heritage have an excellent [2] [website](#) which includes a number of [3] [links](#) to mapping, online publications, thatching resources and a field survey handbook in pdf format. The publication of the handbook in particular is very useful and should be followed by other government bodies.

Issue Navigation

[4] [«Previous entry](#) | [5] [Next entry»](#)

Miscellany printed from Eachtra Archaeological Projects: <http://eachtra.ie>

URL to miscellany: <http://eachtra.ie/index.php/journal/national-inventory-of-architectural-heritage-resources/>

URLs in this post:

[1] 1: <http://eachtra.ie/index.php/journal/issues/1/>

[2] website : <http://www.buildingsofireland.ie/SiteTools/Aboutus/>

[3] links : <http://www.buildingsofireland.ie/Resources/>

[4] «Previous entry: <http://eachtra.ie/index.php/journal/star-carr-and-visualisation-the-estrangement-factor/>

[5] Next entry»: <http://eachtra.ie/index.php/journal/roscrea-spring-conference-2009/>

Wessex Archaeology test trenches evident in google aerial photos

This entry is part 10 of 34 in the Issue **[1]** **1**

Tom Goskar of [2] [Wessex Archaeology](http://www.wessexarch.co.uk/) (exemplars of online archaeology) points out that some of their test trenches (see the scars at the bottom of the image) are evident in [3] [Google](http://maps.google.co.uk/) map's aerial photographs. The location of such test trenches used to be largely recorded only in the project archives and final reports - now this information is seeping out into publicly held/available datasets.



[4]

Issue Navigation

[5] [«Previous entry](#) | [6] [Next entry»](#)

Miscellany printed from Eachtra Archaeological Projects: <http://eachtra.ie>

URL to miscellany: <http://eachtra.ie/index.php/journal/wessex-archaeology-test-trenches-evident-in-google-aerial-photos/>

URLs in this post:

[1] 1: <http://eachtra.ie/index.php/journal/issues/1/>

[2] Wessex Archaeology : <http://www.wessexarch.co.uk/>

[3] Google : <http://maps.google.co.uk>

[4] Image: http://eachtra.ie/new_site/wp-content/uploads/2009/02/weesextrenches_googleimage.jpg

[5] «Previous entry: <http://eachtra.ie/index.php/journal/treasures-of-the-royal-irish-academy-exhibition/>

[6] Next entry»: <http://eachtra.ie/index.php/journal/the-words-we-use-wordle-eachtras-rss-feed-200209/>

[2]



use reveal alot about us and the work we do. Online software (the remarkable [3] www.wordle.net) allows us to visualise the words we have been using lately on this website.

I've had a root around for some other appropriate RSS feeds and here we see current rss feeds from [4] www.wessexarch.co.uk and Sage Publications website for the [5] [European Journal of Archaeology](#).



[6]



[7] the [8] [ADS/AHDS](#) New Collections feed from York.

And finally



[9]

Issue Navigation

[10] [«Previous entry](#) | [11] [Next entry»](#)

Miscellany printed from Eachtra Archaeological Projects: <http://eachtra.ie>

URL to miscellany: <http://eachtra.ie/index.php/journal/the-words-we-use-wordle-eachtras-rss-feed-200209/>

URLs in this post:

[1] 1: <http://eachtra.ie/index.php/journal/issues/1/>

[2] Image: http://eachtra.ie/new_site/wp-content/uploads/2009/02/wordle_eachtrass_200209.jpg

[3] www.wordle.net: **http://www.wordle.net**

[4] www.wessexarch.co.uk : <http://www.wessexarch.co.uk/>

[5] European Journal of Archaeology: <http://eja.sagepub.com/>

[6] Image: http://eachtra.ie/new_site/wp-content/uploads/2009/02/wessex_wordle_rss_200209.jpg

[7] Image: http://eachtra.ie/new_site/wp-content/uploads/2009/02/eja_wordle_currentrss_200209.jpg

[8] ADS/AHDS : <http://ads.ahds.ac.uk/>

[9] Image: http://eachtra.ie/new_site/wp-content/uploads/2009/02/ads_wordle_rss_200209.jpg

[10] «Previous entry: <http://eachtra.ie/index.php/journal/wessex-archaeology-test-trenches-evident-in-google-aerial-photos/>

✓

[11] Next entry»: <http://eachtra.ie/index.php/journal/with-or-without-corners-thoughts-on-some-recent-prehistoric-house-excavations/>

Molas & Shakespeares theatre at Shoreditch, London

This entry is part 17 of 34 in the Issue **[1] 1**

The BBC have an [2] [article](#) (includes video) on the discovery of the foundations of the theatre built by James Burbage in 1576 in Shoreditch, in the then suburbs of the City of London. The work was done by archaeologists from the [3] [Museum of London Archaeology](#) in the summer of 2008.

Issue Navigation

[4] [«Previous entry](#) | [5] [Next entry»](#)

Miscellany printed from Eachtra Archaeological Projects: <http://eachtra.ie>

URL to miscellany: <http://eachtra.ie/index.php/journal/molas-shakespeares-theatre-at-shoreditch-london/>

URLs in this post:

[1] 1: <http://eachtra.ie/index.php/journal/issues/1/>

[2] article : http://news.bbc.co.uk/2/hi/uk_news/7931823.stm

[3] Museum of London Archaeology: <http://www.museumoflondonarchaeology.org.uk/English/>

[4] «Previous entry: <http://eachtra.ie/index.php/journal/ucc-centenary-archaeology-department-lecture-series-2009/>

[5] Next entry»: <http://eachtra.ie/index.php/journal/resorting-to-the-coast-tourism-heritage-and-cultures-of-the-seaside/>

Near the Bend in the River - Eachtra speech 22/1/09

This entry is part 21 of 34 in the Issue **[1]** **1**

Title: **N25 Kilmac book launch speech**

Author: John Tierney, Jacinta Kiely, Penny Johnston

Date: 22.1.09

Version: 1

Status: Final

Circulation: Web

1 *Introduction*

County mayor, Town mayor, Prof Woodman, officers of the county council, the NRA and esteemed guests I would like to say a few words on behalf of Eachtra and my fellow authors

2 *Thanks*

For a project which spanned a decade there are a lot of people who deserve thanks and like any good archaeologist I'll try and take this chronologically and stratigraphically. Firstly Oliver Tierney of Waterford county council who in association with PJ Kindregan were involved in the project from the very earliest days. Officers of the French construction company BEC –Olivier Prugnenec was their liaison and he was a great assistance at the weekly progress meetings held during the construction of the road – the French road crew nicknamed us 'les Taupes' or the moles because everywhere we went we left a pile of soil behind.

From the initial field survey I would like to thank Brian Foley of Kilmacthomas who introduced us to the archaeology of the area and pointed out areas of potential including Graigueshoneen which turned out to have some very interesting sites.

During the excavation the main people I want to thank are the licensees, Stuart Elder, Dave Pollock, Daniel Noonan and Michael Tierney and especially the senior supervisor Aine Richardson. The rest of the team are too numerous to name now but the local people who deserve thanks are; all of the landowners, Tony Kirwan plant hire, and also Aurelia Foley and Martina Fahey, as well as local diggers Maurice Fitzgerald and Carol Power.

During the excavation we also received help from Duchas, then the state heritage body, directly from Barry O'Reilly at the start of the project and Brian Duffy as the fieldwork came to an end.

The nuts and bolts of the Eachtra operation were overseen by Choryna Kiely and Rita Gould.

In the later stages of the postexcavation works we need to thank Antonia Doolan, Bernice Kelly, John Sunderland, Dr Marion Dowd, and Robin Turk. And also specialists such as Abigail Brewer, Mary Dillon and Farina Sternke

James Eogan of the NRA became involved in the project in a meaningful way from approx 2004 and in that time his attention to detail but also his eye to the big picture have been a great and constructive help. As the final reports and the book took form Jacinta, Penny and James proved an effective team and with the final addition of Madeline Duggan as academic editor we pushed on in the production of a book which was written and designed primarily to be read by members of the public rather than specifically for other archaeologists or academics.

When we thought the book was finished I believe Jerry O'Sullivan and Michael Stanley of the NRA both reviewed the manuscript and welcome suggestions were made which we acted upon under the stewardship of James Eogan and of Nick Maxwell of Wordwell Press.

Speaking personally, I am delighted with the production of this book and proud to have been involved in this project especially as it has immersed me in the archaeology of my own adoptive county. While I now live in Co Waterford, coauthor Jacinta Kiely has deep roots in the county being of the Kielys of Lickey Beg in the Drum Hills.

3 Place

The project immersed us in the archaeology of Kilmacthomas and mid Waterford but particularly in the hill of Currabaha, located in the bend in the River Mahon which served as a focus of settlement for thousands of years.

The project also prepared us for the archaeology we were about to encounter throughout the rest of the country in the following decade.

I remember early discussions with Dan Noonan as we excavated the fulachta fiadh in Ahanaglogh; we would only agree then that the sites were used for boiling water but now I think we'd make the case for many of them being slaughter and butchery sites, running red with blood, key sites in the subsistence economy of the BA in Ireland.

Dave Pollock opened our eyes to post medieval trackways and field systems –we have since encountered similar field systems in Westmeath, North Cork and North Tipperary.

Michael Tierney excavated the mutiperiod site at Cooltubrid East and - in that teams interpretation of the presence of a thorn hedge enclosure without a bank or ditch around the settlement - pointed us in a interpretively similar direction for a series of sites we excavated near Toomevara this time last year.

Stuart Elder and Michael were also the first team to run the centreline test excavation methodology which was subsequently adopted by the NRA for all road schemes throughout Ireland. This methodology was first developed in a meeting between an engineer from Bec, Oliver Tierney for Waterford Co Co and myself. This meeting resulted in a method of testing which was appropriate to the scale of the linear infrastructural projects then being planned and it also resulted in more scientific data collection and analysis – it has resulted in a series of belt transects across the Irish landscape which is crying out for statistical analysis.

4 Conclusion

In conclusion, the archaeology of Waterford has changed considerably in the last 20 years. Projects such as the Waterford City Excavations, the Ballylough project, the Waterford outer ring road, the city bypass, and excavations associated with housing developments throughout the county, have uncovered vast amounts of archaeological remains and the challenge we face in the next decade is how best to mine that data and to present it to the public.

Finally, thanks to Bernice and James for arranging this book launch, to Prof Woodman for launching the book and to Waterford CoCo heritage officer Bernadette Guest & County Librarian Donal Brady for hosting the event.

Issue Navigation

[2] [«Previous entry](#) | [3] [Next entry»](#)

Miscellany printed from Eachtra Archaeological Projects: <http://eachtra.ie>

URL to miscellany: <http://eachtra.ie/index.php/journal/near-the-bend-in-the-river-eachtra-speech-22109/>

URLs in this post:

[1] 1: <http://eachtra.ie/index.php/journal/issues/1/>

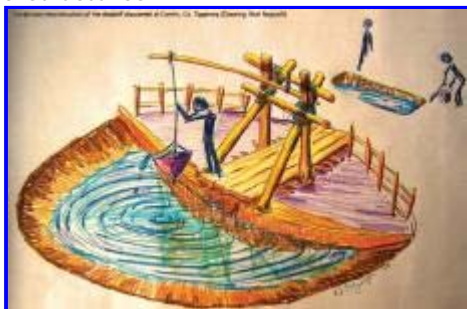
[2] «Previous entry: <http://eachtra.ie/index.php/journal/polish-language-excavation-recording-context-sheets/>

[3] Next entry»: <http://eachtra.ie/index.php/journal/prehistoric-water-management-a-near-east-historic-source/>

Prehistoric water management & a Near East historic source

This entry is part 22 of 34 in the Issue **[1] 1**

Our recent excavations of prehistoric fulachta fiadh, structures and landscapes reveal people who were very engaged in managing water supply and onsite water sources - whether for drinking, large scale boiling or simply to provide dry ground underfoot. The data is there to show that people knew their river systems in great detail, they knew where standing groundwater was available at different times of the year and if it was not available where they could dig wells to find it at depth. It has recently been hypothesized by Niall Roycroft ([2] [Seanda](#), pg 34, 2008, Issue 3) that Bronze Age wells may have had [3] [shaduff](#)-type superstructures.



[4]

More information on Near Eastern water management and *shaduff* in particular can be found in Dr Zena Kamash's Phd [5] [thesis](#) recently uploaded to the Archaeological Data Services Archsearch database.

Issue Navigation

[6] [«Previous entry](#) | [7] [Next entry»](#)

Miscellany printed from Eachtra Archaeological Projects: <http://eachtra.ie>

URL to miscellany: <http://eachtra.ie/index.php/journal/prehistoric-water-management-a-near-east-historic-source/>

URLs in this post:

[1] 1: <http://eachtra.ie/index.php/journal/issues/1/>

[2] Seanda: <http://www.nra.ie/Archaeology/Seanda-NRAArchaeologyMagazine/>

[3] *shaduff*: <http://www.fetlar.shetland.sch.uk/news/shaduff.shtml>

[4] Image: http://eachtra.ie/new_site/wp-content/uploads/2009/03/niallroycroft_shaduff_seanda3_2008_pg34.jpg

[5] thesis : http://ads.ahds.ac.uk/catalogue/library/theses/kamash_2006/download.cfm

[6] «Previous entry: <http://eachtra.ie/index.php/journal/near-the-bend-in-the-river-eachtra-speech-22109/>

[7] Next entry»: <http://eachtra.ie/index.php/journal/google-streetview-coming-to-ireland/>

- Eachtra Journal - <http://eachtra.ie/index.php/journal/> -

Google Streetview coming to Ireland

This entry is part 23 of 34 in the Issue **[1] 1**

Apparently Google [2] [Streetview](#) is coming to the main Irish cities of Cork, Dublin, Limerick, Galway and Waterford in mid-March 2009. The survey will take less than a year to complete and besides being used for whatever Google [3] [want](#), the resulting street frontage records will be an important historic record. This information has come from [4] [Adrian Weckler's](#) reporting of an announcement by Google Ireland.

Issue Navigation

[5] [«Previous entry](#) | [6] [Next entry»](#)

Miscellany printed from Eachtra Archaeological Projects: <http://eachtra.ie>

URL to miscellany: <http://eachtra.ie/index.php/journal/google-streetview-coming-to-ireland/>

URLs in this post:

[1] 1: <http://eachtra.ie/index.php/journal/issues/1/>

[2] Streetview : <http://rotacoo.com/a-couple-of-thoughts-on-street-view>

[3] want: <http://maps.google.com/help/maps/streetview/>

[4] Adrian Weckler's : <http://www.yourtechstuff.com/techwire/2009/03/google-streetview-arrives-in-ireland.html>

[5] «Previous entry: <http://eachtra.ie/index.php/journal/prehistoric-water-management-a-near-east-historic-source/>

[6] Next entry»: <http://eachtra.ie/index.php/journal/stone-boiling-technology-reference-journal-of-archaeological-science/>

Stone boiling technology reference Journal of Archaeological Science

This entry is part 24 of 34 in the Issue [\[1\]](#) [1](#)

[2] [Volume 36, Issue 3](#), March 2009, Pages 684-693

On stone-boiling technology in the Upper Paleolithic: behavioral implications from an Early Magdalenian hearth in El Mirón Cave, Cantabria, Spain

Yuichi Nakazawa[3] [a](#), Lawrence G. Straus[3] [a](#), [4] [b](#), [4] [b](#), [4] [b](#) and [4] [b](#)

^aDepartment of Anthropology, MSC01 1040, University of New Mexico, Albuquerque, NM 87131-0001, USA

^bInstituto Internacional de Investigaciones Prehistóricas de Cantabria (IIIPC), Universidad de Cantabria, Edif. Interfacultativo, Avda. Los Castros, s/n, 39005 Santander, Cantabria, Spain

Abstract

Stone boiling is one of the principal cooking methods used by hunter-gatherer societies. The present paper proposes behavioral and organizational inferences as to how stone boiling was incorporated into hunter-gatherer subsistence practices through an examination of a shallow-basin hearth in an Early Magdalenian level (c. 15,500 ¹⁴C B.P.) of El Mirón Cave, Cantabria (northern Spain). Exploratory analysis of spatial patterns of archaeological remains (bones, lithic artifacts, and fire-cracked rocks) and use-life analysis of fire-cracked rocks demonstrate that the hearth was used and maintained during visits of humans who preyed mainly on ibex and red deer near the site. The relative accessibility of these ungulates and cost-induced technology of stone boiling suggest the implication that stone boiling was employed to maximize the energy and nutrition obtained from carcasses of these game taxa under the circumstance of resource intensification.

Keywords: Stone boiling; Hearths; Spatial patterns; Fire-cracked rocks; Upper Paleolithic; Magdalenian; Cantabrian Spain

Issue Navigation

[5] [«Previous entry](#) | [6] [Next entry»](#)

Miscellany printed from Eachtra Archaeological Projects: <http://eachtra.ie>

URL to miscellany: <http://eachtra.ie/index.php/journal/stone-boiling-technology-reference-journal-of-archaeological-science/>

URLs in this post:

[1] 1: <http://eachtra.ie/index.php/journal/issues/1/>

[2] Volume 36, Issue 3: http://www.sciencedirect.com/science?_ob=PublicationURL&_tokey=%23TOC%236844%232009%23999639996%23836078%23FLA%23&_cdi=6844&_pubType=J&view=c&_auth=y&_acct=C000050221&_version=1&_urlVersion=0&_userid=10&md5=535e15c5f3dcf0c77b77f78d198b9226

[3] ^a: http://www.sciencedirect.com/science?_ob=ArticleURL&_udi=B6WH8-4TT9GPF-1&_user=10&_rdoc=1&_fmt=&_orig=search&_sort=d&view=c&_acct=C000050221&_version=1&_urlVersion=0&_userid=10&md5=461d5e3b974208f337da257a9f286dc1#aff1

[4] ^b: http://www.sciencedirect.com/science?_ob=ArticleURL&_udi=B6WH8-4TT9GPF-1&_user=10&_rdoc=1&_fmt=&_orig=search&_sort=d&view=c&_acct=C000050221&_version=1&_urlVersion=0&_userid=10&md5=461d5e3b974208f337da257a9f286dc1#aff2

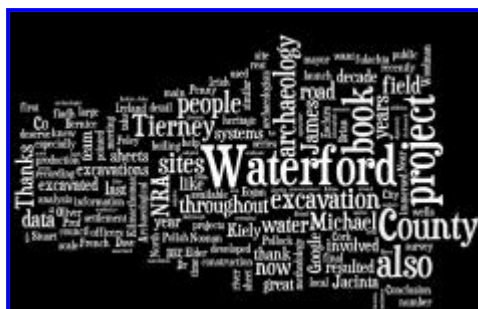
[5] «Previous entry: <http://eachtra.ie/index.php/journal/google-streetview-coming-to-ireland/>

[6] Next entry»: <http://eachtra.ie/index.php/journal/journal-word-cloud-2009/>

- Eachtra Journal - <http://eachtra.ie/index.php/journal/> -

Journal Word Cloud 2009

This entry is part 25 of 34 in the Issue **[1] 1**



[2]

Image created at [3] <http://www.wordle.net/>

We will take these RSS feed word cloud snapshots occasionally to see how the Journal is building up and changing through time. This word cloud analysis will probably be most useful when analysing time dependent summaries from other journals.

Issue Navigation

[4] [«Previous entry](#) | [5] [Next entry»](#)

Miscellany printed from Eachtra Archaeological Projects: <http://eachtra.ie>

URL to miscellany: <http://eachtra.ie/index.php/journal/journal-word-cloud-2009/>

URLs in this post:

[1] 1: <http://eachtra.ie/index.php/journal/issues/1/>

[2] Image: http://eachtra.ie/new_site/wp-content/uploads/2009/03/eachtra_journal_wordle_130309.jpg

[3] <http://www.wordle.net/>: <http://www.wordle.net/>

[4] «Previous entry: <http://eachtra.ie/index.php/journal/stone-boiling-technology-reference-journal-of-archaeological-science/>

[5] Next entry»: <http://eachtra.ie/index.php/journal/hill-of-tara-round-table-meeting-tues-24-march-2009/>

- Eachtra Journal - <http://eachtra.ie/index.php/journal/> -

Specialist, Illustration, SparkofInk, Margaret Kryszka

This entry is part 29 of 34 in the Issue **[1] 1**

Margaret Kryszka is an illustrator who trained with the National Museum in Poland who now works freelance as an archaeological illustrator in Ireland. The quality of her work seems high and the [2] [SparkofInk website](http://www.sparkofink.com/index.php?show=about) is excellent in design and execution.

Issue Navigation

[3] [«Previous entry](#) | [4] [Next entry»](#)

Miscellany printed from Eachtra Archaeological Projects: <http://eachtra.ie>

URL to miscellany: <http://eachtra.ie/index.php/journal/specialist-illustration-sparkofink-margaret-kryczka/>

URLs in this post:

[1] 1: <http://eachtra.ie/index.php/journal/issues/1/>

[2] SparkofInk website : <http://www.sparkofink.com/index.php?show=about>

[3] «Previous entry: <http://eachtra.ie/index.php/journal/the-rath-of-the-synods-book-launch-27th-march-2009/>

[4] Next entry»: <http://eachtra.ie/index.php/journal/illustrate-archaeology-uk-based-group/>

- Eachtra Journal - <http://eachtra.ie/index.php/journal/> -

Illustrate Archaeology UK-based group

This entry is part 30 of 34 in the Issue **[1] 1**

Illustrate Archaeology do archaeological illustrations and webpage design in the UK. The landscape and territory illustrations in the [2] [portfolio](#) are very good - they balance their use of [3] [white](#) and [4] [greyscale](#) tones very well.

Issue Navigation

[5] [«Previous entry](#) | [6] [Next entry»](#)

Miscellany printed from Eachtra Archaeological Projects: <http://eachtra.ie>

URL to miscellany: <http://eachtra.ie/index.php/journal/illustrate-archaeology-uk-based-group/>

URLs in this post:

[1] 1: <http://eachtra.ie/index.php/journal/issues/1/>

[2] portfolio : <http://illustrate-archaeology.com/portfolio.htm>

[3] white : <http://illustrate-archaeology.com/Images/peopleandspaceimages/Adela1.pdf>

[4] greyscale : <http://illustrate-archaeology.com/Images/peopleandspaceimages/Alex3D.pdf>

[5] «Previous entry: <http://eachtra.ie/index.php/journal/specialist-illustration-sparkofink-margaret-kryczka/>

[6] Next entry»: <http://eachtra.ie/index.php/journal/climate-change-and-archaeology-rapid-coastal-zone-assessment-surveys-in-the-uk/>

Climate Change and Archaeology - Rapid Coastal Zone Assessment Surveys in the UK

This entry is part 31 of 34 in the Issue [1] **1**

Back in 1989 we visited the North Yorkshire coast while on an archaeological fieldtrip and the scale of coastal erosion was stunning. The purpose of our visit was to examine soil and sediment profiles; to learn to look at a section as a soil scientist instead of as an archaeologist (rule # 1 - do not trowel the whole surface to within an inch of its life). It was clear then that archaeological sites were being revealed, eroded and also buried by deposition at different spots on the the coastline. Since then English Heritage have developed an approach for dealing with such occurrences - the Rapid Coastal Zone Assessment Surveys are clearly explained and presented [2] [here](#) and also archived [3] [here](#) at the (ever present) ADS.

Issue Navigation

[4] [«Previous entry](#) | [5] [Next entry»](#)

Miscellany printed from Eachtra Archaeological Projects: <http://eachtra.ie>

URL to miscellany: <http://eachtra.ie/index.php/journal/climate-change-and-archaeology-rapid-coastal-zone-assessment-surveys-in-the-uk/>

URLs in this post:

[1] 1: <http://eachtra.ie/index.php/journal/issues/1/>

[2] here: <http://www.english-heritage.org.uk/server/show/category.18389>

[3] here : http://ads.ahds.ac.uk/catalogue/archive/yorksacza_eh_2009/index.cfm?CFID=2344455&CFTOKEN=8776408

9

[4] «Previous entry: <http://eachtra.ie/index.php/journal/illustrate-archaeology-uk-based-group/>

[5] Next entry»: <http://eachtra.ie/index.php/journal/from-cu-chulainn-to-canning-evolution-of-hurling-from-warrior-to-hero-lecture-by-dr-aidan-osullivan/>

- Eachtra Journal - <http://eachtra.ie/index.php/journal/> -

Folklife Conference Sept 2008

Killarney 18-21 September 2008

This entry is part 2 of 34 in the Issue **[1] 1**

[2] [Lakeland Culture and Recording Change](#)

Issue Navigation

[3] [«Previous entry](#) | [4] [Next entry»](#)

Event printed from Eachtra Archaeological Projects: <http://eachtra.ie>

URL to event: <http://eachtra.ie/index.php/journal/folklife-conference-sept-2008/>

URLs in this post:

[1] 1: <http://eachtra.ie/index.php/journal/issues/1/>

[2] Lakeland Culture and Recording Change: <http://www.folklifestudies.org.uk/2008conf.html>

[3] «Previous entry: <http://eachtra.ie/index.php/journal/n18-ornamore-gort/>

[4] Next entry»: <http://eachtra.ie/index.php/journal/near-the-bend-in-the-river/>

- Eachtra Journal - <http://eachtra.ie/index.php/journal/> -

Roscrea Spring Conference 2009

This entry is part 8 of 34 in the Issue **[1] 1**

This time last year we were based up on the N7 in North Tipperary, working on the road between Nenagh and Roscrea. Besides excavating a series of sites the project was also an opportunity to meet George Cunningham again. George is on his 44th Consecutive Conference based at Mt St Joseph Abbey in Roscrea and this years spring conference concentrates on pagan/christian transitions in Irish archaeology and history.



[2]

[3]



Issue Navigation

[4] [«Previous entry](#) | [5] [Next entry»](#)

Event printed from Eachtra Archaeological Projects: <http://eachtra.ie>

URL to event: <http://eachtra.ie/index.php/journal/roscrea-spring-conference-2009/>

URLs in this post:

[1] 1: <http://eachtra.ie/index.php/journal/issues/1/>

[2] Image: http://eachtra.ie/new_site/wp-content/uploads/2009/02/george-spring-conference-2009_page_1.jpg

[3] Image: http://eachtra.ie/new_site/wp-content/uploads/2009/02/george-spring-conference-2009_page_2.jpg

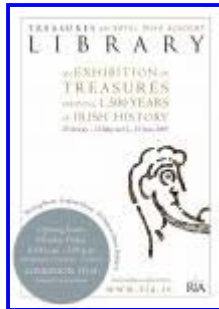
[4] «Previous entry: <http://eachtra.ie/index.php/journal/national-inventory-of-architectural-heritage-resources/>

[5] Next entry»: <http://eachtra.ie/index.php/journal/treasures-of-the-royal-irish-academy-exhibition/>

- Eachtra Journal - <http://eachtra.ie/index.php/journal/> -

Treasures of the Royal Irish Academy Exhibition

This entry is part 9 of 34 in the Issue **[1] 1**



[2]



[3]

This exhibition will take place in Dawson St from February-May and in June 2009.

Issue Navigation

[4] [«Previous entry](#) | [5] [Next entry»](#)

Event printed from Eachtra Archaeological Projects: <http://eachtra.ie>

URL to event: <http://eachtra.ie/index.php/journal/treasures-of-the-royal-irish-academy-exhibition/>

URLs in this post:

[1] 1: <http://eachtra.ie/index.php/journal/issues/1/>

[2] Image: http://eachtra.ie/new_site/wp-content/uploads/2009/02/flyer-treasures-email_page_1.jpg

[3] Image: http://eachtra.ie/new_site/wp-content/uploads/2009/02/flyer-treasures-email_page_2.jpg

[4] «Previous entry: <http://eachtra.ie/index.php/journal/roscrea-spring-conference-2009/>

[5] Next entry»: <http://eachtra.ie/index.php/journal/wessex-archaeology-test-trenches-evident-in-google-aerial-photos/>

/

14th International Congress “Cultural Heritage and New Technologies”

This entry is part 13 of 34 in the Issue **[1] 1**

Call for Papers deadline 31st May

The 14th International Congress “Cultural Heritage and New Technologies”, which will be arranged by the Urban Archaeology of Vienna and their national and international partners, will take place from 16th-18th November, 2009 in the City Hall of Vienna, Austria.

NEW: The general language (except for 2 Workshops) is English!

More informations you will find on our homepage - [2] www.stadtarchaeologie.at.

Main Topic: Archiving

CALL FOR PAPERS -

We would like to invite you to send your abstract for the following workshops or sessions:

Workshops:

- Workshop - “Newbies” (only for students)
- Workshop - Kulturportale Im Internet - Barrierefreiheit (in German)
- Workshop - Kirchliche Bibliotheken und deren Digitalisierung (in German)

Sessions:

- General Session: Archives and Cultural Heritage Management
- Applied Research
- Fundamental Research – Critical Issues
- Session: It-education Archaeology and cultural management: necessity or scourge?
- Cultural Heritage - Cultural Promotion - Tourism in the Danube Region
- Internet Trade of Cultural Objects
- A critical view on archaeological 3D Reconstructions

More informations - Call for Papers:([3] <http://www.stadtarchaeologie.at/tagung/ecall.htm>)

Deadline: **31st May, 2009** – The abstract will be **reviewed** by the Scientific Committee!

Notification for speakers: **26th June, 2009**

Payment for speakers: (latest): 17th August, 2009 (Your payment in time will be taken as confirmation for your participation)

Provisorisches program ([4] <http://www.stadtarchaeologie.at/tagung/einhalt.htm>)

- there you will find more HandsOn Workshops and Tutorials.

If you have further questions, please do not hesitate to contact us.

Best wishes and hope to see you in Vienna

Wolfgang Börner / Susanne Uhlirz

Museen der Stadt Wien - Stadtarchäologie

Mag. Wolfgang Börner

Obere Augartenstraße 26-28, Zi. 2.11

A - 1020 Wien

Tel.: +43 (0)1 4000 81176

Fax: +43 (0)1 4000 84747

[5] <mailto:wolfgang.boerner@wien.gv.at>

[6] <http://www.magwien.gv.at/archaeologie>

[7] <http://www.stadtarchaeologie.at>

Issue Navigation

[8] [«Previous entry](#) | [9] [Next entry»](#)

Event printed from Eachtra Archaeological Projects: <http://eachtra.ie>

URL to event: <http://eachtra.ie/index.php/journal/14th-international-congress-cultural-heritage-and-new-technologies/>

URLs in this post:

[1] 1: <http://eachtra.ie/index.php/journal/issues/1/>

[2] www.stadtarchaeologie.at: <http://www.stadtarchaeologie.at>

[3] <http://www.stadtarchaeologie.at/tagung/ecall.htm>: <http://www.stadtarchaeologie.at/tagung/ecall.htm>

[4] <http://www.stadtarchaeologie.at/tagung/einhalt.htm>:

<http://www.stadtarchaeologie.at/tagung/einhalt.htm>

[5] <mailto:wolfgang.boerner@wien.gv.at>: <mailto:wolfgang.boerner@wien.gv.at>

[6] <http://www.magwien.gv.at/archaeologie>: <http://www.magwien.gv.at/archaeologie>

[7] <http://www.stadtarchaeologie.at>: <http://www.stadtarchaeologie.at/>

[8] «Previous entry: <http://eachtra.ie/index.php/journal/with-or-without-corners-thoughts-on-some-recent-prehistoric-house-excavations/>

[9] Next entry»: <http://eachtra.ie/index.php/journal/the-future-of-historic-cities-challenges-contradictions-continuities/>

The Future of Historic Cities: Challenges, Contradictions, Continuities

This entry is part 14 of 34 in the Issue **[1] 1**

The [2] [10th Cambridge Heritage Seminar](#) (CHS10)

focuses on the preservation

of historic cities and the built environment. It asks: how can cultural

and natural landscapes be sustained in a rapidly globalising world?

How can professionals involved in heritage practice deal with the challenges of modernity without the risk of losing cultural uniqueness and diversity?

Contributions from researchers and policymakers addressing the above and related questions are welcome for the 2009 seminar, which is to be held in **April 2009**.

The theme of this seminar coincides with the celebration of the 800th anniversary

of the University of Cambridge, and marks also the ten-year anniversary of an

interdisciplinary discussion group whose exchange of ideas, questions,

and case studies in cultural heritage studies has given rise to new and

innovative perspectives and approaches to understanding the past.

Issue Navigation

[3] [«Previous entry](#) | [4] [Next entry»](#)

Event printed from Eachtra Archaeological Projects: <http://eachtra.ie>

URL to event: <http://eachtra.ie/index.php/journal/the-future-of-historic-cities-challenges-contradictions-continuities/>

URLs in this post:

[1] 1: <http://eachtra.ie/index.php/journal/issues/1/>

[2] 10th Cambridge Heritage Seminar : <http://www.arch.cam.ac.uk/heritage-seminar/chs09/index.html>

[3] «Previous entry: <http://eachtra.ie/index.php/journal/14th-international-congress-cultural-heritage-and-new-technologies/>

[4] Next entry»: <http://eachtra.ie/index.php/journal/lamas-46th-annual-conference-of-london-archaeologists/>

LAMAS 46th ANNUAL CONFERENCE OF LONDON ARCHAEOLOGISTS

This entry is part 15 of 34 in the Issue **[1]** [1](#)

[2] [London & Middlesex Archaeology Society](#)

SATURDAY 14 MARCH 2009:

WILBERFORCE LECTURE THEATRE, MUSEUM OF LONDON DOCKLANDS

Morning session: Recent Work

11.00am

Chairman's Opening Remarks & Presentation of the Ralph Merrifield Award
Harvey Sheldon, Chair, LAMAS Archaeology Committee

11.10am

Excavations at Prescott Street, Chaz Morse (LP Archaeology)

11.30am

John Kent's Excavations at South Mimms Castle, Derek Renn (LAMAS)

11.50am

Romans in Brentford, Bob Cowie (MOLA)

12.10pm

Work in the City & Beyond in 2008, Sophie Jackson (MOLA)

12.35pm

A Medieval Tidal Mill at Greenwich, Simon Davis (MOLA)

1.00pm LUNCH

Afternoon session: London Icons

2.15pm

The Gardens at Chiswick House, Dave Fellows (English Heritage)

2.45pm

Recording Iconic Buildings, Emma Dwyer (MOLA)

3.15pm

London's Plyhouses, Julian Bowsher (MOLA)

3.45pm TEA

4.30pm

Hampton Court Palace, Ben Ford (Oxford Archaeology)

5.00pm

St Paul's Cathedral, John Schofield

5.30pm CLOSE

There will be displays of work and publications

Cost (inclusive of afternoon tea) will be:

[3] [LAMAS Members: £8.00 Non-Members: £10.00](#)

Ticket applications, display and general enquiries should be addressed to Jon Cotton, Early
Department, Museum of London, 150 London Wall, EC2Y 5HN[4]

jcotton@museumoflondon.org.uk

Issue Navigation

[5] [«Previous entry](#) | [6] [Next entry»](#)

Event printed from Eachtra Archaeological Projects: <http://eachtra.ie>

URL to event: <http://eachtra.ie/index.php/journal/lamas-46th-annual-conference-of-london-archaeologists/>

URLs in this post:

[1] 1: <http://eachtra.ie/index.php/journal/issues/1/>

[2] London & Middlesex Archaeology Society: <http://www.lamas.org.uk/>

[3] LAMAS Members: £8.00 Non-Members: £10.00: <http://www.lamas.org.uk/archconferencepaypal.html>

[4] (jcotton@museumoflondon.org.uk): <mailto:jcotton@museumoflondon.org.uk>

[5] «Previous entry: <http://eachtra.ie/index.php/journal/the-future-of-historic-cities-challenges-contradictions-continui>ties/

[6] Next entry»: <http://eachtra.ie/index.php/journal/ucc-centenary-archaeology-department-lecture-series-2009/>

UCC Centenary Archaeology Department Lecture Series 2009

This entry is part 16 of 34 in the Issue **[1]** **1**

Department of Archaeology Centenary Programme, 2009

The public, academic staff and students of UCC are cordially invited to attend the following lectures and events, to be held in the University on various dates in 2009.

The evening talk series will be delivered by leading international archaeologists, with a range of topics connected to the research interests of the Department. A public conference on the origins of Cork city will be held in April, which will review research on the Viking and medieval walled town. The Centenary Programme also features a photographic exhibition on archaeological excavations conducted by UCC over the past century.

Professor Klavs Randsborg (University of Copenhagen)

‘Kings’s Jelling: Denmark’s Imperial Centre’.

19th February, 2009. 7pm. Boole lecture theatre 2

Professor Andrew Fleming (University of Lampeter)

‘From Wildwood to Pasture in Early Britain’

19th March. 7pm Boole lecture theatre 1

Centenary public conference

Viking and Medieval Cork: the Origins of a City

24-25th April. (Friday evening and all-day Saturday). Venue to be confirmed.

Professor Kristian Kristiansen (University of Gothenberg)

‘1200 BC and the Big Turmoil’

11th June. 7pm, Boole lecture theatre 1

Professor Barry Cunliffe (University of Oxford)

‘Celts from the West’

22nd October. Boole lecture theatre.

Later that evening – Launch of photographic exhibition: ‘Digging up the Past: UCC and archaeological excavation, 1909–2009.’

Professor Jane Bulkstra (Arizona State University)

‘Tuberculosis: The Plague Continues’

12th November. Boole lecture theatre.

Professor Marilyn Palmer (University of Leicester)

‘The Role of Archaeology in the Study of Industrialization’

10th December. Boole lecture theatre.

All lectures will be held in the Boole lecture theatres, located in the basement floor of the University Library building.

Admission to these evening lectures and to the public conference is free.

Further details on the Centenary Programme are available on our web-site: www.ucc.ie/en/DepartmentsCentresandUnits/Archaeology

Information is also available by phoning the Department at 021-4904048 or by emailing us at archaeology@ucc.ie

Issue Navigation

[2] [«Previous entry](#) | [3] [Next entry»](#)

Event printed from Eachtra Archaeological Projects: <http://eachtra.ie>

URL to event: <http://eachtra.ie/index.php/journal/ucc-centenary-archaeology-department-lecture-series-2009/>

URLs in this post:

[1] 1: <http://eachtra.ie/index.php/journal/issues/1/>

[2] «Previous entry: <http://eachtra.ie/index.php/journal/lamas-46th-annual-conference-of-london-archaeologists/>

[3] Next entry»: <http://eachtra.ie/index.php/journal/molas-shakespeares-theatre-at-shoreditch-london/>

Resorting to the Coast: Tourism, Heritage and Cultures of the Seaside

This entry is part 18 of 34 in the Issue **[1] 1**

25—29 June 2009

Blackpool, United Kingdom

organised by

Centre for Tourism and Cultural Change

&

Institute of Northern Studies

Leeds Metropolitan University, United Kingdom

www.tourism-culture.com

Globally, coastlines are arguably the most important sites for tourist activity and tourism development. The various combinations of sea and shore have become highly popular and successful attractions, and a majority of the world's leisure tourists cling to these liminal spaces at the margins of the land. The lure of the 'seaside', the beach, and the resorts which have evolved to service and entertain tourists, is immensely powerful, reflecting a long standing but ever-changing relationship between humans and the oceans. The dominance of coastal tourism within the modern period has generated a wealth of issues which this conference seeks to address, including: The patterns and trends in how tourists mobilise the resources of sea, sand and shore; Ways in which coastal communities have adapted to tourism; Environmental degradation and regeneration of coastal regions and marine ecologies; The historical forms, structures and aesthetics of 'seaside' resorts; Regeneration of 'historic' resorts; Continuing multi-national development of 'pristine' coastlines; Inclusivities and exclusivities in coastal resorts; Changing beach and seaside holiday 'traditions'.

In addressing such issues this major international and multi-disciplinary conference seeks to promote dialogue across disciplinary boundaries on a global stage. We therefore welcome papers from: anthropology, archaeology, architecture, art and design history, cultural geography, cultural studies, ethnology and folklore, history, heritage studies, landscape studies, linguistics, museum studies, political science, sociology, tourism studies and urban/spatial planning. The event will seek to draw upon ideas, cases and best practice from international scholars and help develop new understandings of the relationships between tourism and the coast. It will also provide a major networking opportunity for international scholars, policy makers and professionals.

CALL FOR PAPERS

Key themes of interest to the conference include:

- Histories of coastal tourism developments and resorts;
- Regeneration of coastal economies;
- Social and environmental impacts of coastal developments;
- Representations of seaside holidays in popular culture;
- Worker migrations to coastal sites;
- Beach behaviours and traditions;
- Myths of the sea and coastal communities;
- Coastal resort art and architecture;

- Tourist coastal colonies.

Please submit a 300 word abstract including title and full contact details as an electronic file to the conference manager Daniela Carl (ctcc@leedsmet.ac.uk). You may submit your abstract as soon as possible but no later than **16th March 2009**.

CONTACT

For further details on the conference please visit: [2] http://www.tourism-culture.com/pop_up/forthcoming_conferences.html?PAGE=3

or contact us at:

Centre for Tourism and Cultural Change

Faculty of Arts and Society

Leeds Metropolitan University

Old School Board, Calverley Street

Leeds LS1 3ED, United Kingdom.

Tel. +44 (0) 113 812 8541 or Fax +44 (0) 113 812 8544

Issue Navigation

[3] [«Previous entry](#) | [4] [Next entry»](#)

Event printed from Eachtra Archaeological Projects: <http://eachtra.ie>

URL to event: <http://eachtra.ie/index.php/journal/resorting-to-the-coast-tourism-heritage-and-cultures-of-the-seaside/>

URLs in this post:

[1] 1: <http://eachtra.ie/index.php/journal/issues/1/>

[2] http://www.tourism-culture.com/pop_up/forthcoming_conferences.html?PAGE=3:

http://www.tourism-culture.com/pop_up/forthcoming_conferences.html?PAGE=3

[3] «Previous entry: <http://eachtra.ie/index.php/journal/molashakespeares-theatre-at-shoreditch-london/>

[4] Next entry»: <http://eachtra.ie/index.php/journal/second-meeting-theoretical-archaeology-group-at-stanford-california-may-2009/>

Second Meeting Theoretical Archaeology Group at Stanford, California, May 2009

This entry is part 19 of 34 in the Issue [1] [1](#)

[2] [Stanford Archaeology Center](#) is pleased to announce the second US meeting of the

[3] [Theoretical Archaeology Group](#) (TAG)

May 1-3, 2009

Stanford University, Palo Alto CA

The intention of this TAG conference is to provide a forum for the diverse and interesting theoretical perspectives that exist in the United States, and to bring together both Classical and anthropological archaeology. TAG was founded in Great Britain in 1979 with the aim of exploring inter-disciplinary theoretical issues and discussing their application and use in archaeological interpretation. It has always been an exploratory venue for progressive and innovative archaeological research. The annual conference meeting is an important part of the TAG mission and these meetings have recently started at universities in the United States, with the 2008 meeting being held at Columbia University in New York City.

TAG is centered around a plenary session in which a handful of scholars will comment on this year's theme, "The Future of Things". Our speakers include Rosemary Joyce (University of Berkeley), Stephen Shennan (University College London), Webb Keane (University of Michigan), and Michael Schiffer (University of Arizona).

Sessions on any theoretical theme are welcome and are not dictated by the topic of the plenary session. Session organizers will be responsible for selecting speakers, discussants, and organizing abstracts. There are several format options, such as sessions, workshops, or roundtable discussions and these can either be half-day (6-10 papers) or full day sessions (12-18 papers). The format of the session is entirely open to the organizer. Individuals wanting to present papers should contact session organizers for participation in a specific themed session. Session abstracts should not exceed 500 words and individual paper abstracts should be restricted to 250 words. The deadline for session abstracts is **15th November 2008**, and the deadline for individual paper submissions is **15th February 2009**. Please see the Call for Papers for details.

Issue Navigation

[4] [«Previous entry](#) | [5] [Next entry»](#)

Event printed from Eachtra Archaeological Projects: <http://eachtra.ie>

URL to event: <http://eachtra.ie/index.php/journal/second-meeting-theoretical-archaeology-group-at-stanford-california-may-2009/>

URLs in this post:

[1] 1: <http://eachtra.ie/index.php/journal/issues/1/>

[2] Stanford Archaeology Center: <http://archaeology.stanford.edu/>

[3] Theoretical Archaeology Group : <http://www.stanford.edu/dept/archaeology/cgi-bin/TAG/drupal/>

[4] «Previous entry: <http://eachtra.ie/index.php/journal/resorting-to-the-coast-tourism-heritage-and-cultures-of-the-seas> ide/

[5] Next entry»: <http://eachtra.ie/index.php/journal/polish-language-excavation-recording-context-sheets/>

Hill of Tara - Round Table - Meeting Tues, 24 March 2009

This entry is part 26 of 34 in the Issue [1] 1

Hill of Tara - Round Table - Meeting One

Jonathan Swift Theatre - Trinity College Dublin

Tues, 24 March 2009 7.30 pm - 9.00 pm.

Admission free - All welcome

This is the first meeting of the The Hill of Tara Round Table, a problem-solving initiative, aimed at finding a mutually beneficial solution to the Hill of Tara / M3 motorway problem.

There will be a focus on the UNESCO World Heritage Site nomination of the Hill of Tara, as well as the public consultation currently being conducted by the Department of the Environment, Heritage, and Local Government, on Ireland's List of Tentative UNESCO Sites.

There will also be lectures on the law of the human right to culture and the protection of cultural heritage sites in Ireland, in order to stimulate debate on the value of Tara, and cultural sites.

All stakeholders, such a heritage and environmental groups, community groups, historians and archaeologists, political parties and others interested in the Hill of Tara / M3 issue, are encouraged to participate in what will be a very challenging process - to find a solution for the M3 problem at Tara.

Speakers

Sean Giggins (NUI Galway, Irish Centre for Human Rights) on human right to culture;

Meghan Aibigail (NUI Galway/University of Texas Law School) on UNESCO and protecting cultural heritage;

Sue Redican on the UNESCO nomination of the Great Blasket Islands;

Vincent Salafia, TaraWatch - The UNESCO nomination of the Hill of Tara and other sites.

More information

[2] http://www.tcd.ie/Medieval_Renaissance/

[3] <http://www.tarawatch.org>

Issue Navigation

[4] [«Previous entry](#) | [5] [Next entry»](#)

Event printed from Eachtra Archaeological Projects: <http://eachtra.ie>

URL to event: <http://eachtra.ie/index.php/journal/hill-of-tara-round-table-meeting-tues-24-march-2009/>

URLs in this post:

[1] 1: <http://eachtra.ie/index.php/journal/issues/1/>

[2] http://www.tcd.ie/Medieval_Renaissance/: http://www.tcd.ie/Medieval_Renaissance/

[3] <http://www.tarawatch.org>: <http://www.tarawatch.org/>

[4] «Previous entry»: <http://eachtra.ie/index.php/journal/journal-word-cloud-2009/>

[5] Next entry»: <http://eachtra.ie/index.php/journal/twenty-third-conference-of-irish-medievalists-27th-%e2%80%93-30th-june-2009/>

Twenty-third Conference of Irish Medievalists — 27th – 30th June 2009

This entry is part 27 of 34 in the Issue **[1]** **1**

CALL FOR PAPERS: Papers are invited on medieval archaeology, art, history, language and literature (Latin and the vernaculars). Length of papers: 45minutes (15 minutes discussion) or 20 minutes (10 minutes discussion).

Send details of proposed papers by e-mail - at the latest by 31st March 2009 -

to

Dr Catherine Swift

Irish Studies

Mary Immaculate College

University of Limerick

TEL: (353 61) 204300

FAX: (353 61) 313632

E-mail: Catherine.Swift@mic.ul.ie

Issue Navigation

[2] [«Previous entry](#) | [3] [Next entry»](#)

Event printed from Eachtra Archaeological Projects: <http://eachtra.ie>

URL to event: <http://eachtra.ie/index.php/journal/twenty-third-conference-of-irish-medievalists-27th-%e2%80%93-30th-june-2009/>

URLs in this post:

[1] 1: <http://eachtra.ie/index.php/journal/issues/1/>

[2] «Previous entry: <http://eachtra.ie/index.php/journal/hill-of-tara-round-table-meeting-tues-24-march-2009/>

[3] Next entry»: <http://eachtra.ie/index.php/journal/the-rath-of-the-synods-book-launch-27th-march-2009/>

- Eachtra Journal - <http://eachtra.ie/index.php/journal/> -

The Rath of the Synods book launch 27th March 2009

Excavations by Sean P O'Riordain

This entry is part 28 of 34 in the Issue **[1] 1**



[2]

Best wishes to Eoin Grogan and to all involved in the publication!

Issue Navigation

[3] [«Previous entry](#) | [4] [Next entry»](#)

Event printed from Eachtra Archaeological Projects: <http://eachtra.ie>

URL to event: <http://eachtra.ie/index.php/journal/the-rath-of-the-synods-book-launch-27th-march-2009/>

URLs in this post:

[1] 1: <http://eachtra.ie/index.php/journal/issues/1/>

[2] Image: http://eachtra.ie/new_site/wp-content/uploads/2009/03/rathofsynods_invite_270309.jpg

[3] «Previous entry: <http://eachtra.ie/index.php/journal/twenty-third-conference-of-irish-medievalists-27th-%e2%80%93-30th-june-2009/>

[4] Next entry»: <http://eachtra.ie/index.php/journal/specialist-illustration-sparkofink-margaret-kryczka/>

From Cú Chulainn to Canning – Evolution of Hurling from Warrior to Hero! - Lecture by Dr Aidan O’Sullivan

This entry is part 32 of 34 in the Issue [1] **1**

Join Dr. Aidan O’ Sullivan, from the UCD School of Archaeology, on Thursday, **26th March at 19.00pm**, for an illustrated talk examining the earliest historical and archaeological evidence for hurling and other stick and ball games in Ireland.

Son of a former Clare hurler, John O’Sullivan (1938-2006) of Killaloe, Dr. O’Sullivan is no stranger to the playing field. Former Minor Hurler with Wicklow, he is the owner of a Junior Hurling Championship Medal from 1988 with Vallemount GAC.

If Joe Canning was transported back to Early Christian times, it is unlikely he would have pucked around with a silver sliotar and bronze hurl as the story tells us the great Cú Chulainn did. It is likely that Joe would have entertained himself with a sliotar made from horse hair and a camán carved from the nearest branch.

The speaker will investigate the earliest hurley sticks and balls, the fields and playing grounds, the teams strategies and role of hurling in Irish society. The speaker will focus on Early Christian Ireland, using traces of archaeological evidence, combined with results of recent research into Irish literature and laws by medieval historians.

This talk is a must for all hurling enthusiasts as well as teachers, historians and archaeologists eager to explore in further detail the roots of hurling in Ireland.

Booking is essential as places are limited. Adults €10, Students/OAPs €7

Further information and booking: Contact Selina O’ Regan at the GAA Museum Tel 01 8192361 / 8192323, Email [2] gaamuseum@crokepark.ie or visit [3] www.gaa.ie/museum

Dr. Aidan O’Sullivan is a Senior Lecturer in UCD School of Archaeology with a research interest in early medieval Ireland (AD 400-1200) and leads a number of research programmes in Irish archaeology (e.g. [4] www.emap.ie).

Issue Navigation

[5] [«Previous entry](#) | [6] [Next entry»](#)

Event printed from Eachtra Archaeological Projects: <http://eachtra.ie>

URL to event: <http://eachtra.ie/index.php/journal/from-cu-chulainn-to-canning-evolution-of-hurling-from-warrior-to-hero-lecture-by-dr-aidan-osullivan/>

URLs in this post:

[1] 1: <http://eachtra.ie/index.php/journal/issues/1/>

[2] gaamuseum@crokepark.ie: <mailto:gaamuseum@crokepark.ie>

[3] www.gaa.ie/museum: <http://www.gaa.ie/museum>

[4] www.emap.ie: <http://www.emap.ie/>

[5] «Previous entry: <http://eachtra.ie/index.php/journal/climate-change-and-archaeology-rapid-coastal-zone-assessment-surveys-in-the-uk/>

[6] Next entry»: <http://eachtra.ie/index.php/journal/ayia-41st-annual-conference-april-3rd-5th-2009-sligo/>

10th Cambridge Heritage Seminar The Future of Historic Cities: Challenges, Contradictions, Continuities

This entry is part 34 of 34 in the Issue **[1] 1**

The [2] [10th Cambridge Heritage Seminar](#) (CHS10)

focuses on the preservation

of historic cities and the built environment. It asks: how can cultural and natural landscapes be sustained in a rapidly globalising world?

How can professionals involved in heritage practice deal with the challenges of modernity without the risk of losing cultural uniqueness and diversity?

Contributions from researchers and policymakers addressing the above and related questions are welcome for the 2009 seminar, which is to be held in April 2009. The theme of this seminar coincides with the celebration of the 800th anniversary of the University of Cambridge, and marks also the ten-year anniversary of an interdisciplinary discussion group whose exchange of ideas, questions, and case studies in cultural heritage studies has given rise to new and innovative perspectives and approaches to understanding the past.

Issue Navigation

[3] [«Previous entry](#) |

Event printed from Eachtra Archaeological Projects: <http://eachtra.ie>

URL to event: <http://eachtra.ie/index.php/journal/10th-cambridge-heritage-seminar-the-future-of-historic-cities-challenges-contradictions-continuities/>

URLs in this post:

[1] 1: <http://eachtra.ie/index.php/journal/issues/1/>

[2] 10th Cambridge Heritage Seminar : <http://www.arch.cam.ac.uk/heritage-seminar/chs09/index.html>

[3] «Previous entry: <http://eachtra.ie/index.php/journal/ayia-41st-annual-conference-april-3rd-5th-2009-sligo/>

PHP, Wordpress customization, Design, CSS

by

Maurizio Toscano

and

Lidia Bocanegra